

The state-of-the-art Cummins L9 Turbo Diesel engine is renowned globally for driving performance, economy, durability, and reliability.



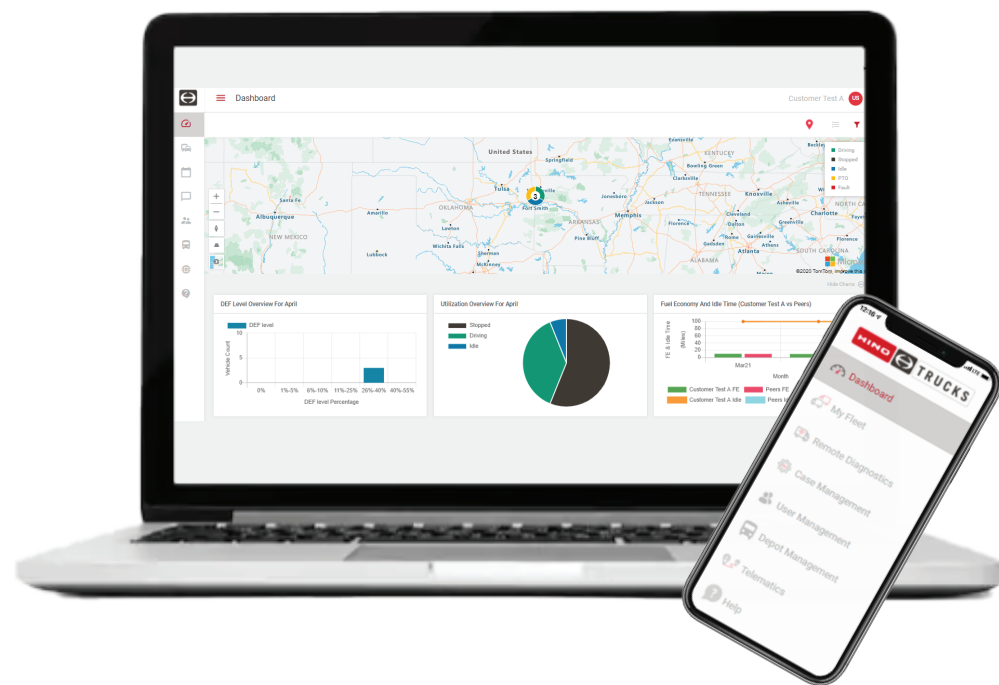
Yes, we do the little things like extra-wide door openings, large step surfaces and grab handles to keep drivers safe, but in today's world, that's not enough. With the Hino Safety Suite, active safety systems drivers are safer with the help of today's cutting edge camera and radar technologies.



Driver retention is tough. Bluetooth Radio w/CD player, Air ride drivers seat, USB charging port, A/C, cruise control, tilt & telescopic steering wheel, will help. That's why it's STANDARD.



Layers of air between you and the bumpy road. Air suspension drivers seat and the Link Cabmate® Air suspension cab are both STANDARD.



## INTRODUCING YOUR CONNECTIVE... **EDGE.**

Gain a competitive Edge with 5 years of access to the Ultimate customer portal and mobile app that delivers vehicle location tracking, a live fleet performance dashboard, vehicle health monitoring including real time fault notifications, streamlined service experience with case

communication, remote update capability maximizing uptime and the flexibility to add-on a 3rd party advanced telematics service from one of Hino Trucks preferred partners and eliminate the need to purchase additional hardware.\*

\*Exceptions may apply. Remote updates are limited to eligible vehicles.



# TRUCKS

A Toyota Group Company

# POWER ON.

The Hino conventional models have been the fastest growing medium duty trucks for years. It started with great aerodynamics, functionality and durability, and has continued with leading edge connectivity. The great just got better. The Hino XL Series sports an all-new automotive grade interior, a host of new advanced safety equipment, and larger cab configurations for more versatility than ever before.

Available in day, extended and crew cab configurations, Hino XL Series trucks are ideal for applications ranging from 33,000 lbs. to 62,000 lbs. GVWR. Factoring in the industry's leading support of HinoWatch and available HinoCare and it's easy to see why Hino is the fastest growing medium duty truck brand in the U.S.A. - POWER ON.

HSS\_XLSERIES\_1221



# 2023

## XL | SERIES

HINO





# ULTIMATE OWNERSHIP EXPERIENCE

## OUR COMMITMENT

When you make the decision to go Hino, its about more than just a truck.

# XL SERIES - SPECIFICATIONS

## ENGINE/DRIVETRAIN/AXLE

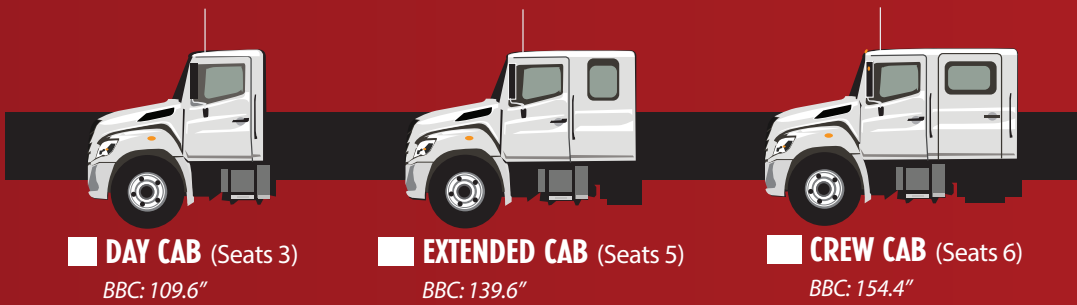
Engine model	Cummins L9
Type	Diesel 4 cycle, 6 cylinder in-line, water-cooled, wet cylinder lined
Turbocharger	Variable Geometry Turbocharger w/integrated engine braking
Fuel System	Bosch Common rail, direct injection
Bore & Stroke	4.49 in. x 5.71 in.
Max. output @ 2,200 rpm	300-360hp
Max. torque @ 1,200 rpm	860-1,150 lb.-ft.
Emissions system	Cooled EGR with Single Module Aftertreatment
Transmission	Allison six speed automatic with neutral at stop (NAS) and coast mode
Driveline	Dana Spicer SPL 170
Front & rear axles	Dana Spicer (Rear-multiple axle ratios available)

## ELECTRICAL EQUIPMENT

Batteries	<input type="checkbox"/> STD Two, parallel connection, 1200 CCA (GR 31)	<input type="checkbox"/> OPT Multiple two battery choices	<input type="checkbox"/> OPT Multiple three battery choices
Alternator	<input type="checkbox"/> STD 12V, 130A, Delco (brush)	<input type="checkbox"/> OPT 12V, 135A (brushless)	<input type="checkbox"/> OPT 160A (brush) <input type="checkbox"/> OPT 200A (brush)
Starter	Denso-12V, 4.8kW		

## TANKS

Fuel Tank (gallons)	<input type="checkbox"/> STD single 50	<input type="checkbox"/> OPT single 90
DEF tank (gallons)	<input type="checkbox"/> STD 7.4 <input type="checkbox"/> OPT dual 50*	



		STRAIGHT TRUCK														TRACTOR		
4x2 Wheelbase (in.)		152	175	181	187	196	205	212	217	235	253	271	280	289	298	304	152	162
Cab to axle (in.)	Day	84.8	107.8	113.8	119.8	128.8	137.8	144.8	149.8	167.8	185.8	203.8	212.8	221.8	230.8	236.8	84.8	97.8
	Extended									119.8	137.8	155.8				206.8		
	Crew					84					141							

		STRAIGHT TRUCK														TRACTOR	
6x4 Wheelbase (in.)		182	194	214	233	261	265	275	281	182	194						
Cab to axle (in.)	Day	114.8	126.8	146.8	165.8	193.8	197.8	207.8	213.8	114.8	126.8						
	Extended						167.8										
	Crew				121												

6x4 axle configuration is only available as an XL8

## XL7 GVWR: 33,000 LBS.

**WEIGHT CAPACITIES:** Front axle range:12,000-14,600 lbs. Rear axle range: 21,000-23,000 lbs.

Engine HP	<input type="checkbox"/> STD L9 300hp	<input type="checkbox"/> OPT L9 330hp	<input type="checkbox"/> OPT L9 360hp		
Transmission model	<input type="checkbox"/> STD 3000 RDS	<input type="checkbox"/> OPT 3000 HS	<input type="checkbox"/> OPT 3500 RDS		
Brakes	<input type="checkbox"/> STD Air S-cam drum	<input type="checkbox"/> OPT Air disc			
Front axle/susp. lbs.	<input type="checkbox"/> STD 12,000	<input type="checkbox"/> OPT 13,200	<input type="checkbox"/> OPT 14,000	<input type="checkbox"/> OPT 14,600	<input type="checkbox"/> OPT 16,000
Rear susp. type	<input type="checkbox"/> STD Spring multi leaf	<input type="checkbox"/> OPT 21K Hendrickson air susp.			
	<input type="checkbox"/> OPT Shock absorber				
	<input type="checkbox"/> OPT Sub leaf helper spring	<input type="checkbox"/> OPT 23K Hendrickson air susp.			
	<input type="checkbox"/> OPT Rubber helper spring				
Rear axle/susp. lbs.	<input type="checkbox"/> STD 21,000	<input type="checkbox"/> OPT 23,000			
Wheel type (22.5")	<input type="checkbox"/> STD Powder coated white	<input type="checkbox"/> OPT Aluminum Accuride or Alcoa			
Frame yeild strength	<input type="checkbox"/> STD 120K PSI(1.9 M RBM)	<input type="checkbox"/> OPT 120K PSI(2.6 M RBM)	<input type="checkbox"/> OPT Double frame 120K PSI(3.8 M RBM)		

## XL8 GVWR: 34,200-66,000 LBS.

**WEIGHT CAPACITIES:** Front axle range:12,000-20,000 lbs. Rear axle range: 21,000-46,000 lbs.

Engine HP	<input type="checkbox"/> STD L9 300hp	<input type="checkbox"/> OPT L9 330hp	<input type="checkbox"/> OPT L9 360hp		
Transmission model	<input type="checkbox"/> STD 3000 RDS	<input type="checkbox"/> OPT 3000 HS	<input type="checkbox"/> OPT 3500 RDS		
Brakes	<input type="checkbox"/> STD Air S-cam drum	<input type="checkbox"/> OPT Air disc			
Front axle/susp. lbs.	<input type="checkbox"/> STD 12,000	<input type="checkbox"/> OPT 13,200	<input type="checkbox"/> OPT 14,000	<input type="checkbox"/> OPT 14,600	<input type="checkbox"/> OPT 16,000
Rear axle/susp. lbs.	Single Axle (4x2)		Tandem Axle (6x4)		
	<input type="checkbox"/> STD 21,000		<input type="checkbox"/> OPT 40,000		
	<input type="checkbox"/> OPT 23,000		<input type="checkbox"/> OPT 46,000		
Rear susp. type	<input type="checkbox"/> STD Spring multi leaf	<input type="checkbox"/> OPT Hendrickson COMFORT AIR			
	<input type="checkbox"/> OPT Shock absorber				
	<input type="checkbox"/> OPT Sub leaf helper spring				
	<input type="checkbox"/> OPT Rubber helper spring				
	<input type="checkbox"/> OPT Hendrickson air susp.	<input type="checkbox"/> OPT Hendrickson HAULMAX Rubber			
Wheel type (22.5")	<input type="checkbox"/> STD Powder coated white	<input type="checkbox"/> OPT Aluminum Accuride or Alcoa			
Frame yeild strength	<input type="checkbox"/> STD 120K PSI (1.9 M RBM)	<input type="checkbox"/> STD 120K PSI (2.1 M RBM)			
	<input type="checkbox"/> OPT 120K PSI (2.6 M RBM)	<input type="checkbox"/> OPT Double frame 120K PSI(3.8 M RBM)			



# XL SERIES POPULAR OPTIONAL EQUIPMENT

- Allison Fuel Sense Plus / Max
- Anti-siphon device insert in fuel tank
- Differential lock and controls
- Engine idle shutdown 3, 5, 10 minute
- Back-up alarm
- Cab paint, exterior - custom (factory)
- Exhaust system - vertical stack type
- Jacobs engine brake
- Mirrors, fender mounted-chrome (both sides or passenger only)
- Mirrors, outside rearview-chrome
- Mirrors-power heated (available in chrome)
- Convex Passenger side look down mirror
- Power windows and door locks (available with keyless entry)
- Programmable speed limit 65,70 mph
- Trailer brake package
- Rear of cab work light
- SAF Holland FW17 or FW35 fifth wheel (stationary)  24" slide



Battery disconnect & jump start station



Hino Safety Suite



WABCO OnGuardACTIVE™ Collision Mitigation with Adaptive Cruise Control & Electronic Stability Control



WABCO OnLaneALERT™ Lane Departure Warning System

+All features and options are subject to change without notice.  
 ++For more model specifications, contact your local Hino dealer.  
 \* Running change.



## HINOWATCH - STANDARD

24/7 Roadside Assistance is standard for 3 years on all Hino trucks - unlimited mileage. HINOWATCH includes lockout, out of fuel, battery jumpstart and warranty towing.



## HINOCARE - AVAILABLE

Preventive maintenance saves money and increases uptime across your entire fleet. HINOCARE multi-year programs mean you can match your needs with your long term goals for cost management.



## 5 YEAR TRANSMISSION WARRANTY - STANDARD

Only Hino provides a 5-year, unlimited mile Allison transmission warranty... **STANDARD.**

**Cummins** Standard with a 2 year/250,000 mile CUMMINS engine warranty with the option to max assurance at 7 years or 300,000 miles.